

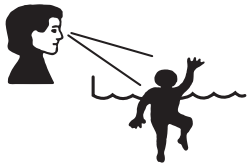
**READ ALL INSTRUCTIONS BEFORE ASSEMBLING THIS INFLATABLE DEVICE AND
KEEP INSTRUCTIONS FOR FUTURE USE.**

**FAILURE TO FOLLOW THESE WARNINGS AND INSTRUCTIONS CAN RESULT IN
SERIOUS INJURY OR DEATH TO USERS, ESPECIALLY CHILDREN.**



WARNING

Prevent Drowning



Children especially toddlers are at high risk of drowning.
Closely watch children who are in or near this Constant Air Inflatable.
Empty Constant Air Inflatable or prevent access when not in use.

No Diving



You can break your neck and be paralyzed!
Diving into shallow water can result in a
broken neck, paralysis or death.

Children, especially toddlers, are at high risk of drowning. Closely watch children who are in or near this constant air inflatable. Assign an adult to supervise the constant air inflatable.

Empty constant air inflatable or prevent access when not in use. Store the empty constant air inflatable in such a way that it does not collect water from rain or any other source.

Safety Section

Drowning Risk:

Prevent young children from drowning.

Keep unsupervised children from accessing the constant air inflatable by installing fencing or other approved barrier around all sides of constant air inflatable. State or local laws or codes may require fencing or other approved barriers. Check state or local laws and codes before setting up constant air inflatable.

Drowning occurs silently and quickly and can occur in as little as 2 in. (5 cm) of water.

Keep children in your direct sight, stay close, and actively supervise them when they are in or near this constant air inflatable and when you are filling and emptying this constant air inflatable.

When searching for a missing child, check the constant air inflatable first, even if child is thought to be in the house.

Do not leave toys inside pool when finished using, since toys and similar items might attract a child to the constant air inflatable.

Position furniture (for example, tables, chairs) away from constant air inflatable and so that children cannot climb on it to gain access to the constant air inflatable.

After using constant air inflatable, remove water to a level of 1/2 in. (1 cm) or less.

Diving Risk:

No diving. You can break your neck and be paralyzed!

Electrocution Risk:

Keep all electrical lines, radios, speakers and other electrical appliances away from the constant air inflatable.

Do not place constant air inflatable near or under overhead electrical lines.

First Aid:

Keep a working phone and a list of emergency numbers near the constant air inflatable.

Become certified in cardiopulmonary resuscitation (CPR). In the event of an emergency, immediate use of CPR can make a lifesaving difference.

CAI



PIÑATA BASH PARTY SLIDE™

The product should be periodically examined for conditions that may result in the risk of fire, electric shock, or injury to persons and that, in an event such conditions, the product should not be used until properly repaired.

IMPORTANT SAFETY INSTRUCTIONS. PLEASE READ AND SAVE THESE INSTRUCTIONS CAREFULLY BEFORE USING THIS PRODUCT.

WARNING!

To reduce the risk of fire or electric shock, do not use this blower motor with any solid-state speed control device. Warn the user to unplug or disconnect the appliance from the power supply before servicing.

DANGER

To prevent electric shock, do not immerse the blower motor in water; wipe clean with damp cloth.

Do not operate any blower motor with a damaged cord or plug. Discard blower motor or return to an authorized service facility for examination and/or repair. Do not run cord under carpeting. Do not cover cord with throw rugs, runners or similar coverings. Do not route cord under furniture or appliances. Arrange cord away from traffic area and where it will not be tripped over.

CAUTION - ELECTRICALLY OPERATED PRODUCT

Operation of Blower Motor not recommended for children under 14 years of age. As with all electric products, precautions should be observed during handling and use to prevent electric shock.

AGES 5-12

 **WARNING:**
CHOKING HAZARD - Small parts.
Not for children under 3 yrs.

SAFETY PRECAUTIONS

WARNING! Failure to follow the installation and operating instructions present a risk of **SERIOUS INJURY OR DEATH.**

CHILDREN MUST HAVE ADULT SUPERVISION WHEN PLAYING WITH THIS PRODUCT.

NEVER LEAVE CHILDREN UNATTENDED.

- NOT FOR ADULT USE. NOT FOR CHILDREN OVER 12 OR UNDER 5 YEARS OF AGE.
- THIS PRODUCT IS NOT FOR USE BY ANYONE WEIGHING OVER 120 lb (54 kg).
- Platform:
 - Individual user maximum weight limit: 120 lb (54 kg)
 - Combined user maximum weight limit: 150 lb (68 kg)
- Whole Product:
 - Total weight limit: 600 lb (270 kg)
 - Total no. of users : 5
- The maximum fall height is 56 in (142 cm).
- For outdoor use.
- Keep away from fire.
- To prevent electrical shock or damage to blower motor, do not pour water on it and never leave outside overnight.
- Keep the blower motor away from water.
- Keep children away from blower motor.
- Remove shoes, eyeglasses and sharp objects before playing with the product.
- No flipping, piling, pushing or wrestling when playing with the product.
- No head-first sliding. Always slide feet-first.
- Only one child should be on the platform at a time.
- Only one child should climb up the climbing wall at a time.
- Do not curl the water hose.
- Do not play on the slide without filling the pool with at least 8 in (20 cm) of water. Thoroughly wet all slide surfaces, platforms and climbing walls before use to ensure optimal play performance.

- No diving of any sort is safe.
- Always dry the product thoroughly before storing. Can cause mildew if stored damp.

SET UP:

- Adult assembly required.
- NOT FOR COMMERCIAL USE. This product is intended for family domestic use only.
- Place and use on level ground.
- Do not set up or use in windy, snowy or rainy weather.
- Do not set up or use on concrete, asphalt or any other hard surfaces.
- Use on flat lawn only, not pavement or other hard surfaces. Lawn should be free of rocks, bumps, depressions, sticks, etc.
- Set up a safe distance from fences, garages, houses, walls, water, overhanging branches, laundry lines, overhanging electrical wires and other obstructions.
- To prevent product from becoming unstable and the possibility of serious injury or death, do not play on the product until it is completely filled with air and anchored properly.
- The design of the constant air inflatable requires a fair amount of air to emit from its porous fabric material. This ensures that the product remain inflated while allowing it to resist small tears and punctures.
- To anchor the product properly, ALWAYS anchor the product and blower motor with corresponding ground stakes before use.
- Keep the blower motor and power cord away from water.
- To extend the life of the product, do not leave the product in the sun when not in use.

SLIDING INSTRUCTIONS:

- Be sure the slide surface is wet before use.
- Do not stand on the top of the slide, on the slide rails, or on the slide itself.
- Climb up the climbing wall and sit at the top of the slide with your feet pointing down the slide. Scoot forward and slide down feet first.
- To avoid the risk of serious injury or death, always slide with your feet first, and never slide on your knees, stomach, or head first. Do not jump off or dive off the slide.
- Only one child should slide down the slide at a time.
- Never slide while facing direct sunlight.
- To avoid possible serious injury, the sliding path and landing area must be clear of all obstacles and other users before sliding.
- Do not jump off or dive off the slide into the pool to avoid the risk of serious injury or death.
- Do not jump off or dive off the climbing wall into the pool to avoid the risk of serious injury or death.

REPAIR PATCH INSTRUCTIONS

For your convenience, a repair patch has been included to repair holes in the inflatable section. In the event of an accidental puncture, cut out a suitably sized patch. Make sure you round the corners of your repair patch to avoid peeling. Make sure area to be patched is clean. Press patch firmly over the puncture. Do not inflate for 30 minutes.

WARNING

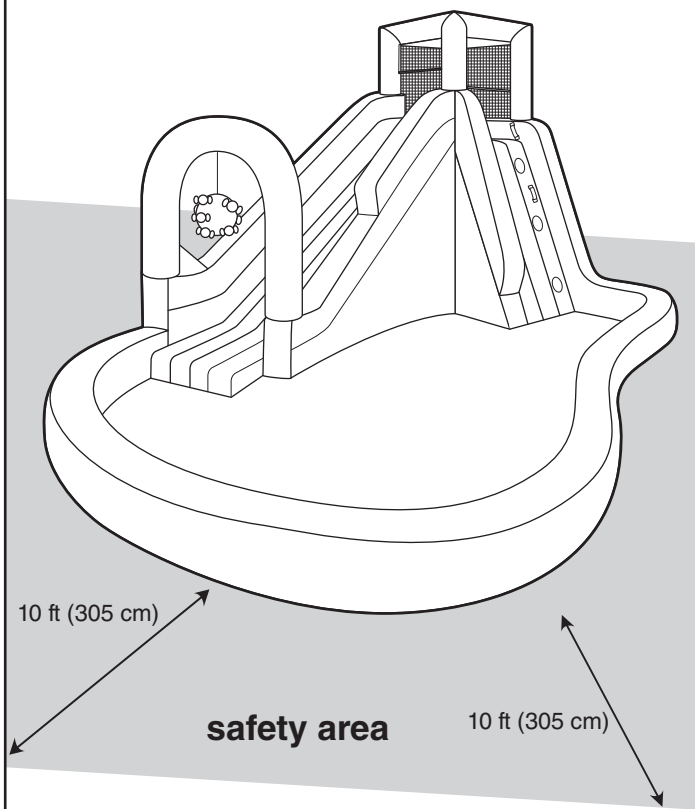
While every attempt is made to embody the highest degree of protection in all equipment, we cannot guarantee freedom from injury. The user assumes all risk of injury due to use. All merchandise is sold on this condition, which no representative of the company can waive or change.

INTRODUCTION

Suit up for fiesta fun under the sun with the Piñata Bash Party Slide™! Grab ahold of the inflatable batting stick and take a swing at the candy-covered piñata ball as you race down the slide. How many candy pieces will you swat off? Reusable Velcro-attached candy pieces means you and your friends will be splashing and bashing all summer long! All this fun inflates in under 2 minutes with the included blower motor, while heavy-duty Dura-Tech construction ensures lasting strength and durability.

SETUP INSTRUCTIONS

PLACEMENTS: Use on flat lawn only, not pavement or other hard surfaces. Lawn should be free of rocks, bumps, depressions, sticks, etc. The product should be set up in a location that has a minimum distance of 10 ft (305 cm) from any freestanding structures or obstructions, including houses, garages, fences, trees, playground equipment and large rocks.



SETUP

1. Unfold the constant air inflatable and place in the desired position on a smooth and level surface.
2. Lay out the water hose assembly and match the number on each sprayer to the correct position on the arch of the inflatable. Once the numbers are matched, attach the sprayers to the arch and corresponding position using the Velcro straps provided. Secure the water tubing using the Velcro hook-and-loop straps located on top of the arch and along the side of the inflatable. (Fig A1-A3)
3. Attach the long intake tube at the back of the inflatable to the mouth of the blower motor using the attached Velcro Strap. To ensure a secure fit, wrap the strap around the mouth of the blower motor and tightly attach the Velcro strap. (Fig A4-A6)
4. Use the drawstring to tie shut the short air release tube along the back of the constant air inflatable. (Fig A7)
5. Position the blower motor in a straight line, perpendicular and level to the back of the inflatable. The blower motor should be placed on a stable surface and remain upright after the inflatable is inflated. The blower motor is a high-volume fan capable of moving a lot of air very quickly. Place the blower motor in an area where it will not suck in dirt or leaves. Keep blower motor away from children, water and moving vehicles. Set up the inflatable far away from any structures or obstructions. Once positioned, secure the blower motor with the blower motor ground stakes provided. (Fig A8)
6. Do not set up over concrete, asphalt, packed earth, or any other hard surfaces. A fall onto a hard surface can result in serious injury.
7. Locate the loops around the bottom of the inflatable and anchor them to the turf, sand soil or rock soil with the water slide ground stakes provided. (Fig A9)
8. Ground stakes must be completely inserted into the ground so that no part of the stake is protruding above the ground surface. This will help prevent tripping or injuries resulting from a fall.
9. Plug the blower motor into a properly grounded outlet and turn it on. The inflatable should inflate in under 2 minutes. Do not allow children to use the inflatable until it is fully inflated.
10. Close the water valve at the bottom of the pool. (Fig A10)
11. Fill the pool with at least 8 in (20 cm) of water before playing. Thoroughly wet all slide surfaces, platforms and climbing walls before use to ensure optimal play performance.
12. Do not fill the product tub to more than the maximum fill line marked inside the pool wall.
13. After inflation, the blower motor should run continuously while children are playing.

FOR INFLATABLE HANGING PINATA BALL & BATTING STICK:

14. Roll out the piñata ball and batting stick. Inspect for holes, tears or other damage. (Fig A11)
15. Inflate this product with AIR. (Fig A12)

NOTE: For easy air inflation, use a manual air pump designed specifically for plastic inflatables.

BY MOUTH: Remove the air valve plug and squeeze the base of the valve causing the inner flap to open for inflation.

BY PUMP: Remove the air valve plug and insert air pump nozzle into the valve. The air pump nozzle should be inserted deep enough to open the inner valve flap.

Do not over inflate the item. Once the item is completely inflated, then insert the air valve plug to seal it shut.

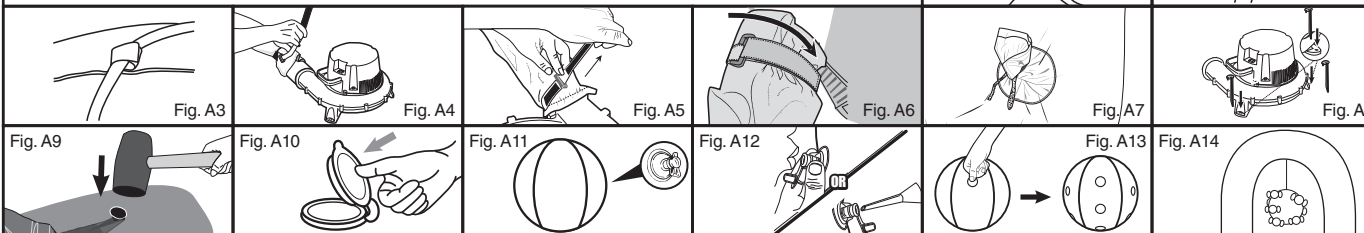
NOTE: Fill inflatable with air until it is firm and solid. If there is any straining at the seams, the item is over inflated. If any seam begins to strain, immediately stop inflation and release air to reduce the pressure until all signs of stress on the inflatable are gone. DO NOT use the inflatable if there is straining at the seams. Use of an overinflated item may result in serious injury, paralysis or death. Inspect this product for rips, tears or punctures. Do not use if damaged.

16. Peel off the Velcro patches from the label sheet and evenly apply around the inflatable ball as shown. (Fig A13)

NOTE: Place the Velcro patches along the center of each panel as shown for optimal performance.

17. Thread the string on the slide's arch through the loop of the piñata ball. Tie to secure in place.

18. Attach the candy pieces to the piñata ball by matching up their Velcro patches. (Fig A14)



Inflate this product with AIR.

NOTE: For easy air inflation, use a manual air pump designed specifically for plastic inflatables.

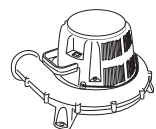


WARNING:

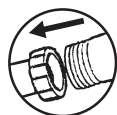
Overinflation may cause damage to the piñata ball and batting stick. This product is intended to be used as a toy and not as a personal flotation device.



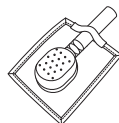
PIÑATA BASH PARTY SLIDE™ SETUP DIAGRAM



Blower Motor



Water Spraying
Hose Assembly



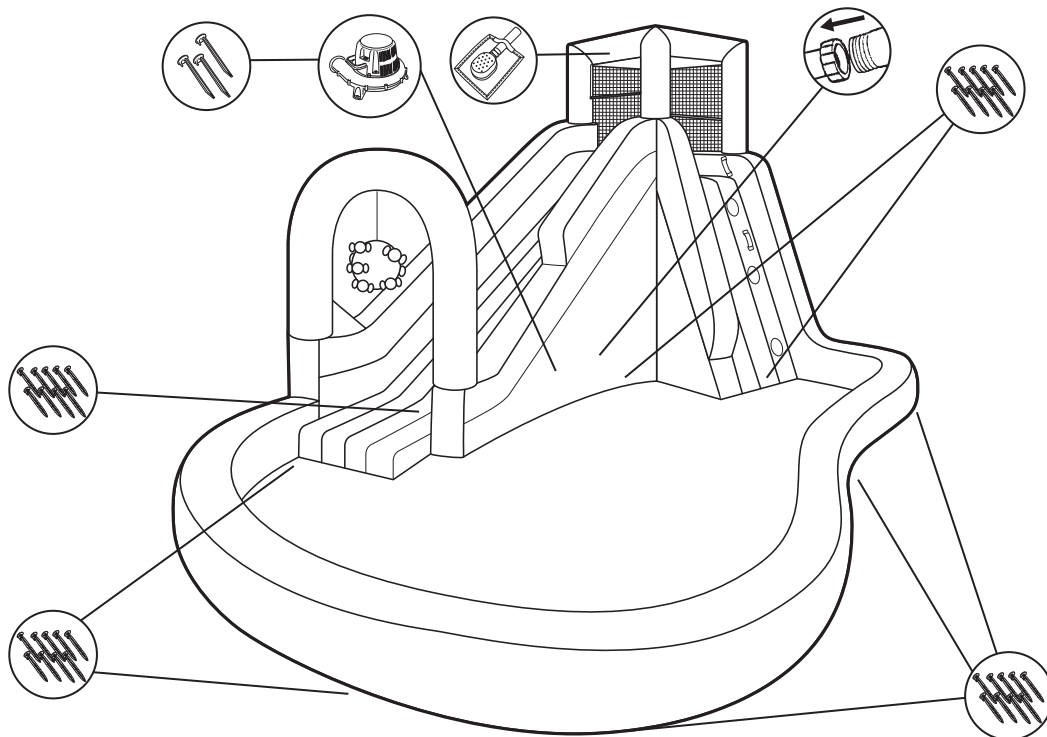
Water Spraying
Hose Assembly



Water Slide
Ground Stakes



Blower Motor
Ground Stakes



CONNECTING THE WATER HOSE

1. Wet the inflatable before connecting the garden hose to the hose adapter.
2. Locate the end of the Water Spraying Hose Assembly that should be attached to the inflatable.
3. Attach the screw cap on the hose assembly to your garden hose.
4. Turn on the water slowly. It may take a few moments until water begins to spray.
5. Adjust the water pressure so that the water sprays on the sliding surface of the inflatable, keeping the inflatable wet.

IMPORTANT WATER PRESSURE AND OPERATING INFORMATION

Water pressure can vary dramatically between cities. Please read the following to answer some common questions.

Areas of LOW WATER PRESSURE:

- For maximum performance, it is recommended to use a 5/8 in (1.6 cm) diameter garden hose.
- If water does not spray sufficiently, it is usually due to low water pressure. Make sure the water is on all the way; as long as the slide is getting wet, it will be fun to use.
- Long hoses reduce water pressure: The longer the hose, the farther the water travels from the faucet, thus reducing water pressure. In areas of low water pressure, this could affect performance of the water spray. Try using a shorter hose if you have one.

Areas of HIGH WATER PRESSURE:

- If water shoots over the slide, adjust the faucet to lower the water pressure. It is important that the water lands on the slide to keep it wet and slick.

⚠ WARNING

Follow Anchoring Instructions

User must read and follow anchoring instructions to ensure the proper number of anchors used, soil conditions, and stake installation.

ANCHORING THE INFLATABLE

Stakes are to be driven straight down until the top of the stake is below ground level. Do not drive stakes at an angle. For best holding strength, drive stakes into hard, dry soil. In loose or wet soil, or both, stake holding strength will be reduced.



Yes



No

Stake Angle

HOW TO PLAY

Slide and use the inflatable batting stick to swat off the Velcro-attached candy pieces. Take turns sliding to see who can swat off the most candy.

HOW TO USE

1. Follow all setup instructions to ensure the product has been set up properly.
2. Remove shoes, eyeglasses, and sharp objects before playing with the product.
3. No flipping, piling, pushing or wrestling when playing with the product.
4. Only one child should be on the platform at a time.
5. Only one child should climb up the climbing wall at a time.
6. No diving of any sort is safe.
7. Get wet before sliding.
8. Do not stand on the top of the slide, on the slide rails or on the slide itself.
9. Climb up the climbing wall of the slide and sit at the top of the slide with your feet pointing down the slide. Scoot forward and slide down the slide feet first.
10. To avoid the risk of serious injury or death, always slide with your feet first and never slide on your knees, stomach or head first. Do not jump off or dive off the slide.
11. Only one child should slide down the slide at a time.
12. Never slide while facing direct sunlight.
13. To avoid possible serious injury, the sliding path and landing area must be clear of all obstacles and other users before sliding.
14. When sliding into the pool, the entering area should be clear of all submerged obstacles, non-submerged obstacles and other users.
15. Do not jump off or dive off the slide into the pool to avoid the risk of serious injury or death.
16. Do not jump off or dive off the climbing wall into the pool to avoid the risk of serious injury or death.
17. Adult supervision is required to ensure observation of all parts of the play area, all activity on the inflatable device and keeping the entrance free from obstruction at all times.

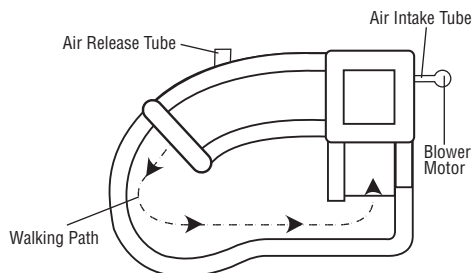
AFTER SLIDING

After you have finished sliding, exit the splash pool and stand up on the grass.

To avoid danger of tripping over the air intake tube and causing potential injury, do not walk on the side of the inflatable that has the blower motor attached. Always walk around the inflatable as shown with the dotted line in the diagram below.

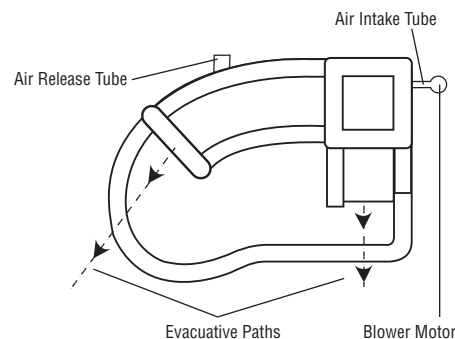
Never stand, walk, or run on the slides as you may slip and injure yourself.

There should be a clear and unobstructed path along the walking paths. Make sure that the blower motor does not interfere with the walking paths.



EMERGENCY EVACUATION

For emergency evacuation, users should evacuate through the exit and walk to a safe location as shown with the dotted lines in the diagram below. To avoid danger of tripping over the air intake tube and causing potential injury, do not walk on the side of the inflatable that has the blower motor attached.



SAFETY CHECKLIST: READ BEFORE USING

SET UP:

1. Before set up: Check under and around the inflatable for sharp objects, rocks, sticks, lawn sprinklers or any other object that can cause injury or damage the inflatable. Set up on a flat lawn surface, free of depressions or high spots.
2. Use with manufacturer-supplied stakes **ONLY**.
3. Clear away at least 10 ft (305 cm) surrounding the entryways/exits of the constant air inflatable so they are open and free of all obstacles. The path ways should be on level grass or some other shock absorbing surface.
4. Do not use a damaged inflatable.
5. Wet entire slide before connecting the hose to the inflatable and before playing.
6. Blower motor and electrical cords should not pass under the inflatable and interfere with its operations.
7. Blower motors and electrical cords shall be positioned at least 4.3 ft (1.3 m) from a walled side of the inflatable device and 8.2 ft (2.5 m) from an open side.
8. The product shall be inflated with the provided blower motor or with another manufacturer-specified replacement.

USE:

1. Adult setup and supervision is required at all times. Adults should read instruction manual entirely and instruct children on proper use of this inflatable.
2. Wet bathing suits or clothing before using the product. Remove all hard or sharp objects from person and pockets, such as toys, buckles, keys, jewelry and watches.
3. For long periods of play, move inflatable occasionally to prevent depressions in ground underneath.
4. Check all ground stakes occasionally to make sure they stay secure and flat on the ground.
5. Do not leave water hose turned on when you are not using the inflatable. Only turn it on when playing.
6. While playing with the inflatable, it is normal for some water to seep into the interior through the seam areas. IT IS IMPORTANT to completely dry prior to storing.
7. The sliding path must be clear of users before sliding.

PROPER USE OF PRODUCT:

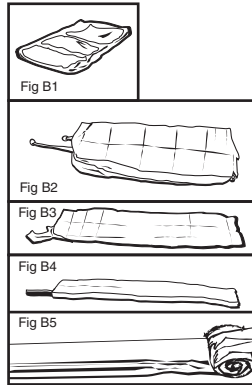
1. Separation of larger children from smaller children.
2. Prevention of users from climbing or hanging on the containing walls.
3. Prevention of inappropriate activities (for example, somersaults and rough play).
4. Restrictions on the consumption of food, drink and gum.
5. Correct use position of inflatable device (for example, on slide, climbing wall).
6. Keep pets off of the inflatable device.
7. Do not attach items to the inflatable device that are not specifically designed for use with the inflatable device, such as, but not limited to, jump ropes, clothesline, pet leashes, cables and chains as they have the potential to cause a strangulation hazard.

NOTE:

- Check your local country or city regulations for requirements on securing the pool.
- Secure the pool from unauthorized use.

TO DEFLATE:

1. Remove all users from the product.
2. Remove the batting stick, pinata ball and candy pieces from the product and store them in a secure place where it is out of reach of children
3. Turn off and disconnect the water hose from the plug.
4. Drain inflatable pool area by opening the water valve.
5. Completely dry off the inflatable by allowing it to stand inflated for at least 2 hours before wiping down with a dry beach towel or soft, absorbent cloth, noting deep pockets in the climbing wall and the splash pool.
6. Unplug the blower motor.
7. Disconnect the long intake tube from the blower motor and place the blower motor in a safe place.
8. Open the air release tube and allow the inflatable to deflate completely. It should deflate on its own within 5 minutes. (Fig B1)
9. Remove the clear water tubing from the inflatable.
10. Remove the water slide stakes of the inflatable by pulling on the head of the stakes. DO NOT pull on the inflatable corners!
11. Allow the inflatable to dry completely before rolling up, which may take up to 48 hours. Be sure the pool and inflatable are free of dirt, leaves, sand, etc. This will lengthen the life of your inflatable.
12. Fold the inflatable in half, making sure that the release tube is parallel to the fold. Fold it in half 2 more times, parallel to the first fold. (Fig B2-B3)
13. Roll the inflatable tightly starting from the end opposite the intake and release tubes. (Fig B4-B5)
14. Roll the inflatable tightly from one end to the other and avoid any creasing.
15. Once the inflatable batting stick, pinata ball are completely dry, carefully deflate and then roll them up.



IMPORTANT:

Never store the product when wet. Allow to dry before rolling up.
Move the product every day to prevent browning or damage to the lawn.
Follow all previous instructions each time you set up the product.
Store the product in a secure place, away from children, to prevent suffocation.

STORAGE:

Slip the carrying bag over the rolled-up inflatable. Flip over the bag and the inflatable, close the bag and store the inflatable and the blower motor in a dry place. Store the inflatable in a secure place away from children to prevent suffocation. Never leave either the product or the blower motor outside when not in use. (Fig B6-B8)

To prevent mold and other damage to the inflatable, it is strongly advised to air dry the inflatable with the blower motor to ensure it is completely dry before folding up for storage.

To extend the life of the water spraying hose assembly, store it in an adequately ventilated area. Do not store the water spraying hose assembly together with the inflatable.



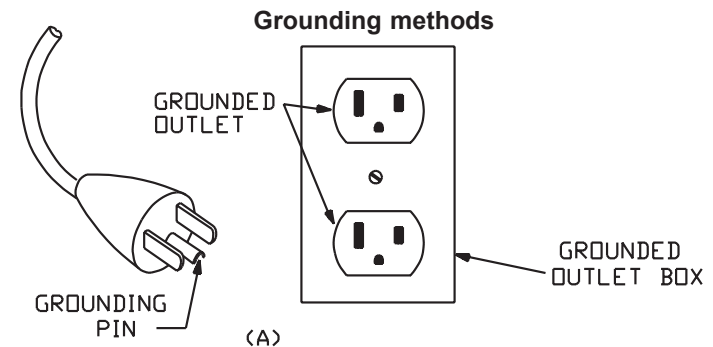
GROUNDING INSTRUCTIONS

This product should be grounded. In the event of an electrical short circuit, grounding reduces the risk of electric shock by providing an escape wire for the electric current. This product is equipped with a cord containing a grounding wire with an appropriate grounding plug. The plug must be plugged into an outlet that is properly installed and grounded in accordance with all local codes and ordinances.

DANGER – Improper installation of the grounding plug can result in a risk of electric shock. If repair or replacement of the cord or plug is necessary, do not connect the grounding wire to either flat blade terminal. The wire with insulation having a green outer surface with or without yellow stripes is the grounding wire.

Check with a qualified electrician or service technician if the grounding instructions are not completely understood or if in doubt as to whether the product is properly grounded. Do not modify the plug provided; if it will not fit the outlet, have the proper outlet installed by a qualified electrician.

This product is for use on a nominal 120-V circuit and has a grounding plug similar to the plug illustrated in Figure A. Only connect the product to an outlet having the same configuration as the plug. Do not use an adapter with this product.



MAINTENANCE OF PIÑATA BASH PARTY SLIDE™

1. Check the inflatable at regular intervals for holes, tears or other damage. DO NOT use a damaged inflatable. Use of a damaged inflatable could result in serious injury or death.
2. In addition to checking the product at a regular interval, be sure to complete a thorough check of the entire product at the beginning of each season or series of use.
3. If any component of the product is damaged or deteriorated, discontinue use and contact the manufacturer.
4. Regularly check the condition of the ground stakes that hold the inflatable in place. Damage to or deterioration of the stakes could result in the inflatable becoming unstable, which could result in serious injury.
5. To keep the product clean, you can use a dry cloth or a cloth dampened with a neutral, non-flammable, nontoxic cleaning and sanitizing solution or pure water to wipe the surface of the inflatable or blower motor.
6. Use a dry cloth to clean the foot holes and remove debris after each play cycle. Make sure that there are no water and debris in the pocket steps before storing.

BLOWER MOTOR OPERATING INSTRUCTIONS

INTENDED USE:

This product is only to be used for inflating the Piñata Bash Party Slide™. Household Use only.

WARNING:

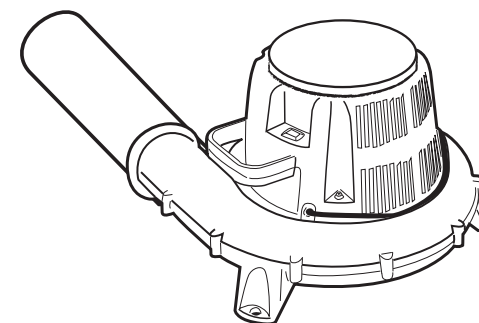
1. Electrical current requirements: 110-120VAC/60Hz
2. The power supply to the blower motor should include a reliable earth terminal and current leakage protection device.
3. The power cord to the appliance should be clearly marked, so that persons using lawn mowers or other types of equipment are aware that there is a cord on the ground.
4. The blower motor should never be left unattended when in use. The appliance is not to be used by children.
5. No objects should cover the air intake when the blower motor is in use. Sand, small stones or other objects should not be allowed to be sucked into the blower motor.
6. Under no circumstances should a finger or any sharp object be inserted into the air intake.
7. The power supply to the blower motor should not be exchanged for any other type of supply. If the power supply is damaged, it should be repaired by a technician.
8. To avoid the danger of electrical shock, do not use the blower motor in the rain.
9. Do not use extension cords as this would present an electrocution hazard.
10. Do not leave the blower motor exposed to strong sunlight.
11. Children should not touch the blower motor. Children must not play on the product until the blower motor is properly installed.
12. Children should not attach foreign objects to the blower motor that are not specifically designed for use with the blower motor, such as, but not limited to jump ropes, clothesline, pet leashes, cables and chains as they may cause a strangulation hazard.
13. Sudden gusts of wind may lift the product off the ground.
14. Blower motors and electrical cords should be kept out of reach.
15. The product shall be inflated with the provided blower motor or with another manufacturer-specified replacement.

INSTALLATION:

1. Place the blower motor on the ground and then secure it by inserting the ground stakes into the holes in the base.
2. The blower motor should be installed in a well-ventilated location and on a level surface.
3. The air input of the inflatable (the long intake tube) is to be attached to the air output of the blower motor and secured in place with a cord.

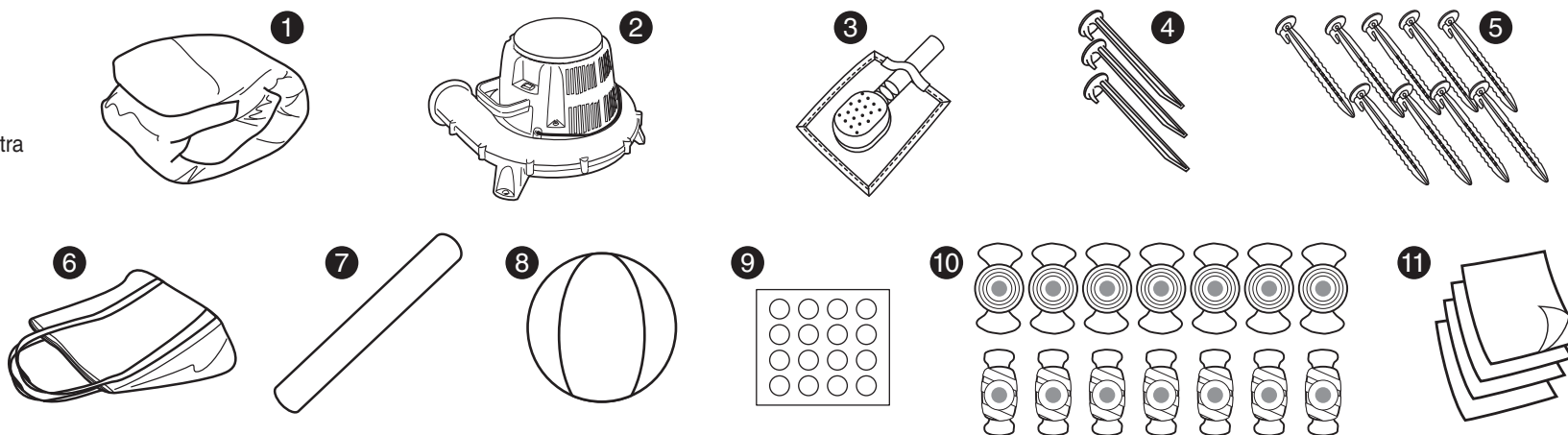
USING THE BLOWER MOTOR:

1. Plug the blower motor into a power supply.
2. To avoid electrical shock, never plug in or unplug the appliance with wet hands.
3. The power supply should be disconnected if the blower motor or the product needs to be transported or moved.
4. There is an ON/OFF switch on the blower motor body. Press "I" to switch on the blower motor, and press "O" to switch off the blower motor.



PART LIST

1. 1 Inflatable Water Slide
2. 1 Blower Motor
3. 1 Water Spraying Hose Assembly
4. 3 Blower Motor Ground Stakes
5. 8 Water Slide Ground Stakes + 1 Extra
6. 1 Carrying Bag
7. 1 Inflatable Batting Stick
8. 1 Inflatable Hanging Piñata Ball
9. 16 Velcro patches
10. 14 Blow-Molded Candy Pieces
11. 4 Repair Patches

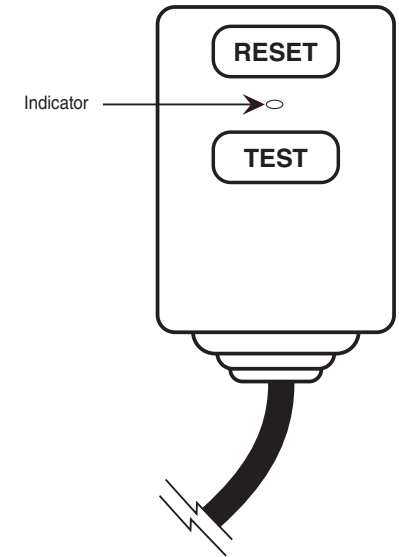


Attn: Each time the blower motor is used, a simple test with the Ground Fault Circuit Interrupter (GFCI) must be conducted.

1. Push the "Reset" button located on the GFCI receptacle, first to assure normal blower motor and GFCI operation.
2. Press "I" to switch on the blower motor.
3. Push the "Test" button located on the GFCI receptacle. The blower motor should go "OFF."
4. Push the "Reset" button again. The blower motor should go "ON" again

The indicator on the GFCI receptacle will be red whenever the "Reset" button is pressed.

If the blower motor remains "ON" when the "Test" button is pushed, the blower motor or GFCI is not working properly. If blower motor or GFCI is not working properly, please call a qualified, certified electrician who can assess the situation.



Maintenance and Storage:

1. To keep the product clean you can use a dry cloth or a cloth dampened with a neutral, non-inflammable, nontoxic cleaning and sanitizing solution or pure water to wipe the surface of the blower motor.
2. You should not clean the blower motor with a chemical solution as this may damage the coating and plastic parts.
3. Never clean the blower motor in water.
4. Never store the blower motor outside. Keep it in a dry place indoors unreachable by children.
5. Regularly check the condition of the blower motor ground stakes. Damage to or deterioration of the stakes could result in the blower motor becoming unstable, which could result in serious injury.
6. Regularly check the condition of the power cord. Damage to or deterioration of the cord could cause a serious electrocution hazard. If the cord is damaged or deteriorated, immediately discontinue use of the blower motor and contact the manufacturer.
7. This blower motor is equipped with an Auto-Reset Protector. If the motor overheats, the protector will trip to protect your safety. Turn off the blower motor and let it cool down completely before using again. Please follow the instructions carefully to avoid any wrong operation that will cause overheating.
8. To prevent any damage to the power cord, always carry the blower motor by its built-in handle. Do not carry the blower motor by its cord or twist the cord. Keep the power cord dry.

ALL NEW MATERIAL. Surface Clean Only. Electrical ratings: 110-120VAC, 60Hz, 4.2A

60 DAY LIMITED WARRANTY FROM DATE OF PURCHASE.
BANZAI IS USED UNDER LICENSE BY FOCUS BRAND LTD.
CONTENTS AND SPECIFICATIONS MAY VARY FROM THOSE ILLUSTRATED.



BEFORE RETURNING TO STORE

PLEASE VISIT
THE CUSTOMER SERVICE WEBSITE
BELOW FOR IMMEDIATE ASSISTANCE
REGARDING QUESTIONS OR
PROBLEMS WITH THIS PRODUCT.

www.toysinquiry.com

35445
TANG RONG ROAD,
CHANGPING, DONGGUAN, CHINA
ALL RIGHTS RESERVED
MADE IN CHINA
www.toysinquiry.com



WARNING - Electrocution Hazard

DO NOT USE EXTENSION CORDS

WITH THIS PRODUCT.

NOTE: The maximum wind speed for

operations of the inflatable shall be 20 mph.